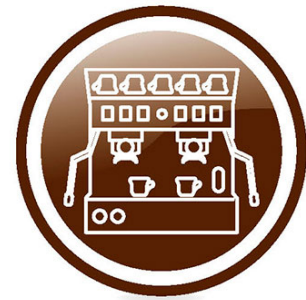




Spare parts for:

**Espresso coffee machines**



Suitable for:

**BRUGNETTI-AURORA**



This catalogue is automatically generated.  
Therefore, the sequence of the items might  
not be always shown at best.

Updates will be issued in case of additions  
and/or amendments.

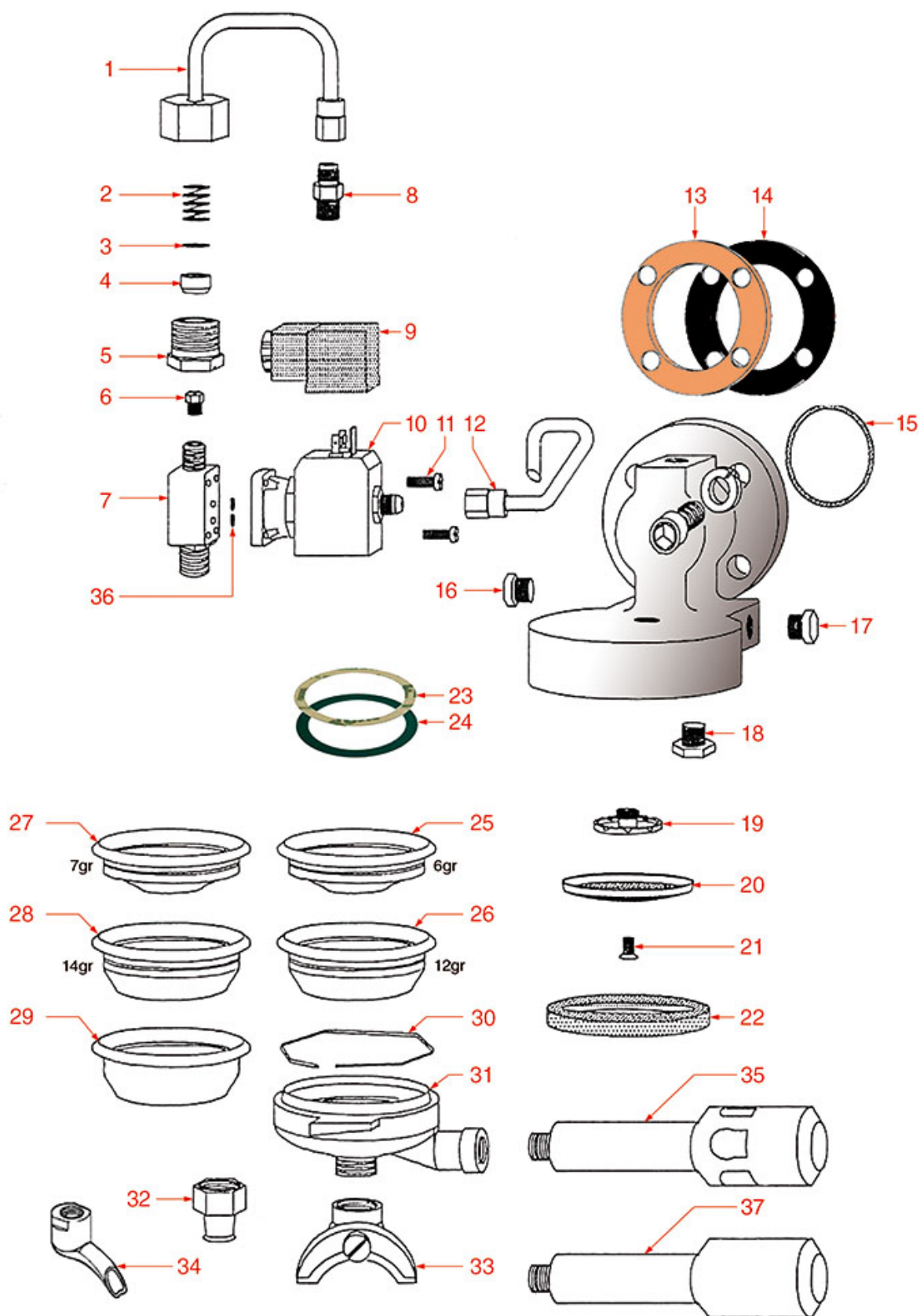
*Suitable **universal spare parts** may not be included*





## BREW GROUP OLD TYPE

### OLD TYPE





# BRUGNETTI-AURORA

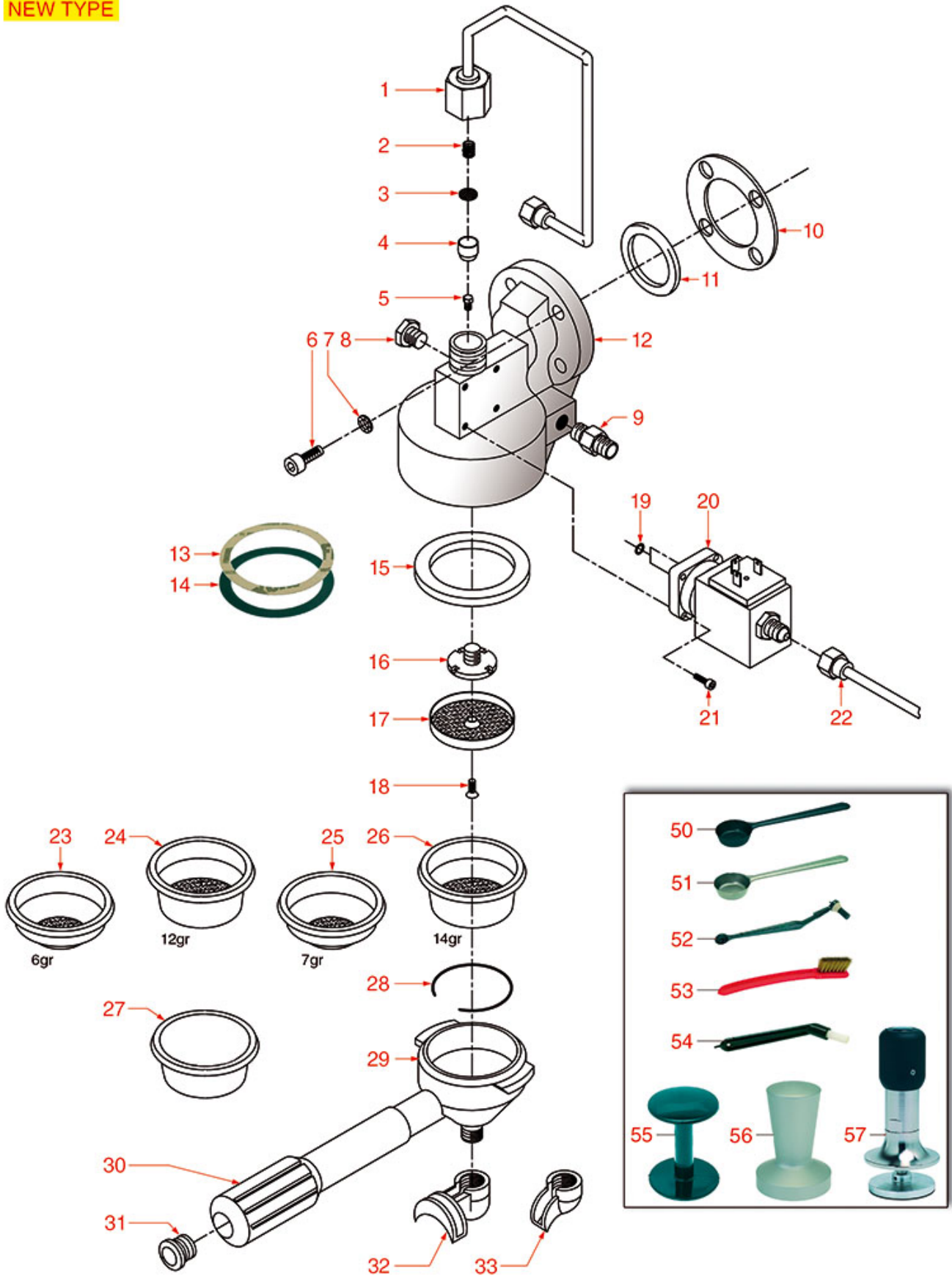


Position	LF code no.	Description
2	1250506	FILTER BLOCKING SPRING $\varnothing$ 9x14 mm
3	1160516	WATER FILTER $\varnothing$ 11 mm
4	1160515	FILTER HOLDER BUSHING
6	1501541	NOZZLE M6x1 HOLE $\varnothing$ 0,8 mm
7	1018506	NOZZLE HOLDER FITTING FOR SOLENOID VALVE
9	3120034	FEMALE LARGE CONNECTOR
10	1120330	3-WAY SOLENOID VALVE LUCIFER 240V 50Hz
10	1120335	3-WAY SOLENOID VALVE PARKER 230V 50/60Hz
11	1455034	CYLINDER HEAD SCREW M4x10
13	1186015	COFFEE GROUP GASKET $\varnothing$ 78x42x2 mm
14	1186098	COFFEE GROUP GASKET $\varnothing$ 78x43x2 mm
15	1186466	O-RING GASKET 03181 EPDM
19	1501014	GROUP SPRINKLER $\varnothing$ 30 mm M9.6x1
20	1081026	SHOWER $\varnothing$ 56.5 mm
22	1186711	FILTER HOLDER GASKET $\varnothing$ 72x56x9 mm
23	1190011	PAPER SEAL $\varnothing$ 72x58x0.8 mm
24	1190003	RUBBER SHIM $\varnothing$ 70x57x1 mm EPDM
25	1160251	1 CUP FILTER 6 g
26	1160252	2-CUP FILTER 12 GRAMS
27	1160335	1 CUP FILTER 7 g
28	1160337	2-CUP FILTER 14 GRAMS
29	1160339	BLIND FILTER
30	1250101	FILTER BLOCKING SPRING $\varnothing$ 1,00 mm INOX
31	1165022	FILTER HOLDER COFFEE MACHINES
32	1022503	STRAIGHT SINGLE SPOUT $\varnothing$ 3/8"
33	1022502	DOUBLE SPOUT $\varnothing$ 3/8"
34	1022501	SINGLE SPOUT $\varnothing$ 3/8"
35	1241067	FILTER KNOB M12
36	1186611	O-RING 02025 RED SILICONE
36	1186612	O-RING 02025 VITON
37	1241501	FILTER HOLDER HANDLE M12



## BREW GROUP NEW TYPE

**NEW TYPE**



AU0201

Positions without LF code no.: upon request



# BRUGNETTI-AURORA

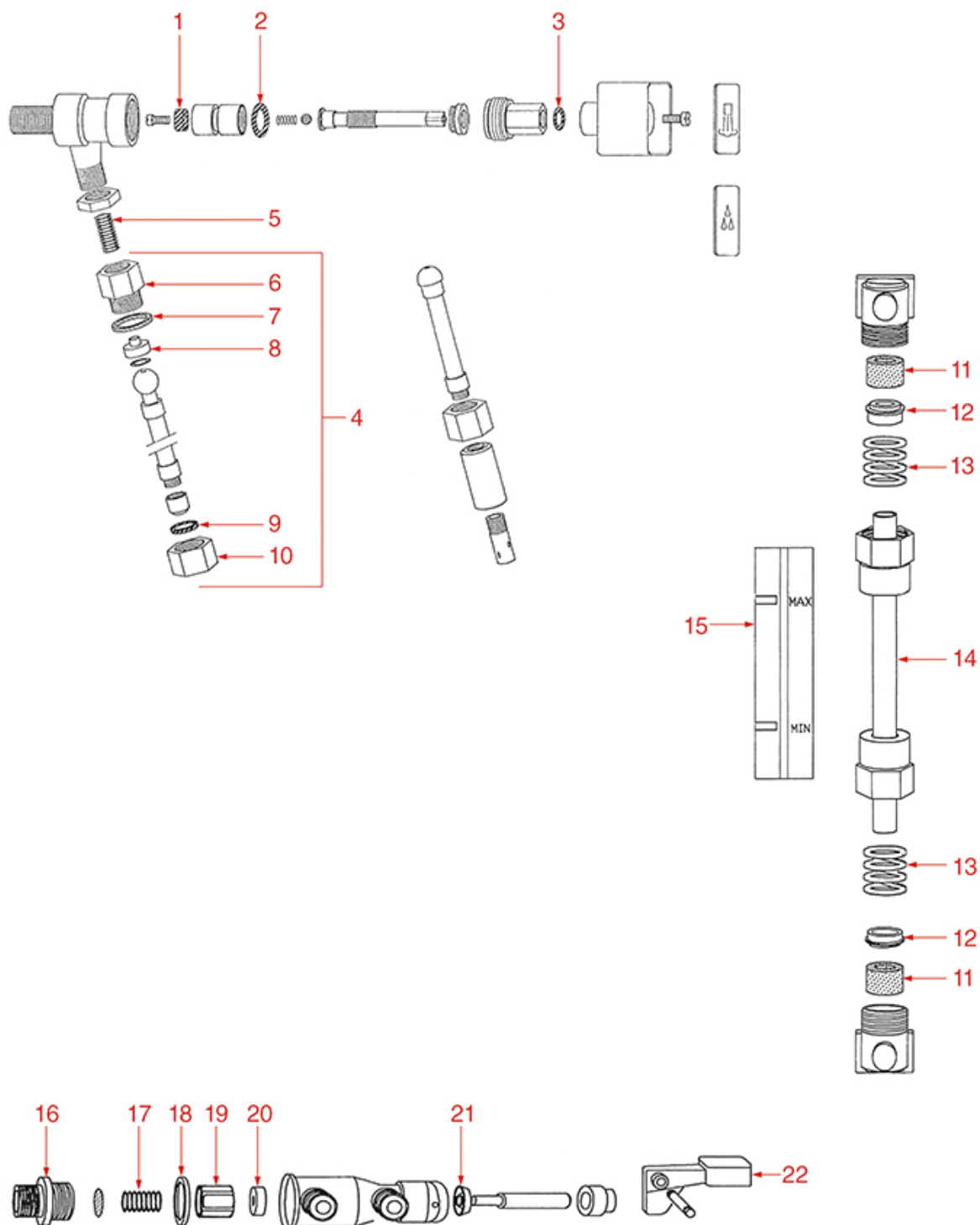


Position	LF code no.	Description
2	1250506	FILTER BLOCKING SPRING $\varnothing$ 9x14 mm
3	1160516	WATER FILTER $\varnothing$ 11 mm
4	1160515	FILTER HOLDER BUSHING
5	1501541	NOZZLE M6x1 HOLE $\varnothing$ 0,8 mm
10	1186015	COFFEE GROUP GASKET $\varnothing$ 78x42x2 mm
10	1186098	COFFEE GROUP GASKET $\varnothing$ 78x43x2 mm
11	1186466	O-RING GASKET 03181 EPDM
13	1190011	PAPER SEAL $\varnothing$ 72x58x0.8 mm
14	1190003	RUBBER SHIM $\varnothing$ 70x57x1 mm EPDM
15	1186711	FILTER HOLDER GASKET $\varnothing$ 72x56x9 mm
16	1501014	GROUP SPRINKLER $\varnothing$ 30 mm M9.6x1
17	1081026	SHOWER $\varnothing$ 56.5 mm
19	1186611	O-RING 02025 RED SILICONE
19	1186612	O-RING 02025 VITON
20	1120330	3-WAY SOLENOID VALVE LUCIFER 240V 50Hz
20	1120335	3-WAY SOLENOID VALVE PARKER 230V 50/60Hz
23	1160251	1 CUP FILTER 6 g
24	1160252	2-CUP FILTER 12 GRAMS
25	1160335	1 CUP FILTER 7 g
26	1160337	2-CUP FILTER 14 GRAMS
27	1160339	BLIND FILTER
28	1250101	FILTER BLOCKING SPRING $\varnothing$ 1,00 mm INOX
29	1165088	FILTER HOLDER F/COFFEE MACHINES
30	1241169	FILTER HOLDER HANDLE M12
31	5051776	CAP CHROMED KNOB FILTER HOLDER
32	1022502	DOUBLE SPOUT $\varnothing$ 3/8"
33	1022501	SINGLE SPOUT $\varnothing$ 3/8"
50	1069001	PLASTIC MEASURING SPOON 20 ml
51	1069002	STAINLESS STEEL MEASURING SPOON 20 ml
52	1384003	BLACK SHOWER CLEANING BRUSH
53	1384002	BRUSH FOR MAINTENANCE
54	1384001	BRUSH FOR COFFEE SHOWER
55	1385002	NYLON COFFEE TAMPER $\varnothing$ 50/57 mm
56	1385053	ANODISED ALUMINUM TAMPER $\varnothing$ 58 mm
57	1385600	DYNAMOMETRIC MANUAL COFFEE TAMPER $\varnothing$ 57mm



## TAPS AND LEVEL OLD TYPE

OLD TYPE





# BRUGNETTI-AURORA

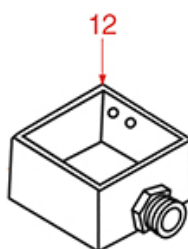
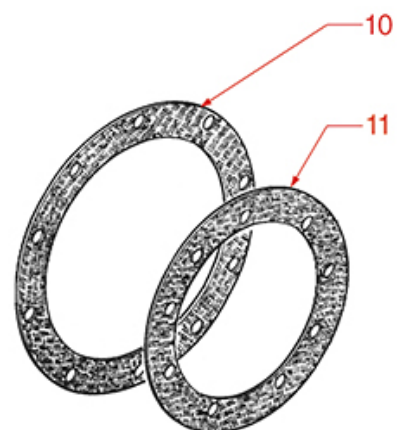
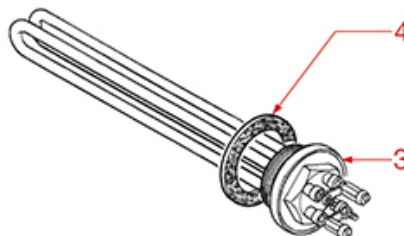
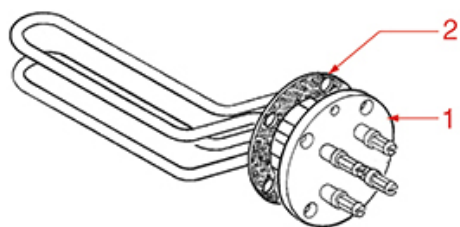


Position	LF code no.	Description
1	1186316	EPDM FLAT GASKET $\varnothing$ 15x4x4 mm 60 SH
1	1186527	FLAT EPDM GASKET $\varnothing$ 15x4x4 mm 80 SH
2	3243086	O-RING 0117 EPDM
3	1186236	O-RING 03043 VITON
4	1449326	STAINLESS STEEL STEAM PIPE COMPL. $\varnothing$ 10 m
7	1186044	COPPER FLAT GASKET $\varnothing$ 24x20x1 mm
9	1186318	O-RING 03043 EPDM
11	1186227	FLAT EPDM GASKET $\varnothing$ 21x11.5x5 mm
12	1186090	LEVEL GLASS GASKET HOLDER
14	1520501	LEVEL GLASS $\varnothing$ 12x175 mm
18	1186314	PTFE FLAT GASKET $\varnothing$ 22x17x2 mm
19	1186093	GASKET HOLDER FOR TAP
20	1186316	EPDM FLAT GASKET $\varnothing$ 15x4x4 mm 60 SH
20	1186527	FLAT EPDM GASKET $\varnothing$ 15x4x4 mm 80 SH
21	1186091	LIP SEAL $\varnothing$ 15x8x4 mm



## MISCELLANEOUS

### OLD TYPE







# BRUGNETTI-AURORA



Position	LF code no.	Description
1	1755622	HEATING ELEMENT 2000W 220V
2	3186006	ASBESTOS FREE FLAT GASKET ø 95x56x3 mm
3	1755026	HEATING ELEMENT 2000W 230V
3	1755134	HEATING ELEMENT 2400W 230V
4	1186623	PTFE FLAT GASKET ø 53x43x3 mm
4	1186633	FLAT CARBO GASKET ø 53x42x3 mm
4	3186010	ASBESTOS FREE FLAT GASKET ø 54x42x2 mm
5	1319551	PUSH-BUTTON PANEL 5 BUTTONS
7	1319545	PUSH-BUTTON PANEL MEMBRANE 5 BUTTONS
10	1186276	BOILER GASKET ø 210x150x3 mm
12	1527030	DRAIN TANK
13	1079002	STANDARD NYLON CAPPUCINATORE



Suitable for:

Suitable for:

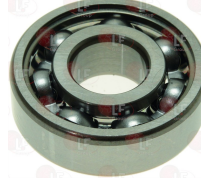
## Bearings

**1063300 BEARING 6201 NSK**  
external  $\varnothing$  32mm - internal  $\varnothing$  12mm - thickness 10 m



BRUGNETTI-AURORA

**3063145 BEARING 6201 SKF**  
external  $\varnothing$  32 mm - internal  $\varnothing$  12 mm - thickness 10



## Boiler safety valves

**1515110 BOILER VALVE  $\varnothing$  1/2" M 1.8bar CE-PED**  
calibration pressure 1.8 bar  
steam outlet capacity 6.3 Kg/h



BRUGNETTI-AURORA

BRUGNETTI-AURORA LF-1523652

**1523534 BOILER VALVE  $\varnothing$  1/4" M**  
stainless steel - new model  
internal PTFE coating - or viton



BRUGNETTI-AURORA 000634

**1523537 BOILER VALVE  $\varnothing$  1/4" M**  
stainless steel - old model  
or viton



BRUGNETTI-AURORA

**1523538 BOILER VALVE  $\varnothing$  1/4" M**  
made of brass



BRUGNETTI-AURORA

**1515100 BOILER VALVE  $\varnothing$  3/8" M 1.8bar CE-PED**  
calibration pressure 1.8 bar  
steam outlet capacity 6.3 Kg/h



BRUGNETTI-AURORA

## Cappuccino makers - Cappuccinatore

**1079002 STANDARD NYLON CAPPUCCINATORE**



BRUGNETTI-AURORA LAV2012



Suitable for:

Suitable for:

## Coffee filters

1160339 BLIND FILTER



BRUGNETTI-AURORA 000034

1160251 1 CUP FILTER 6 g



BRUGNETTI-AURORA 000033.1

1160281 1-CUP FILTER 7 gr - BASIC QUALITY



BRUGNETTI-AURORA

1160252 2-CUP FILTER 12 GRAMS



BRUGNETTI-AURORA 000033.2

1160282 2-CUP FILTER 14 GRAMS - BASIC QUALITY



BRUGNETTI-AURORA

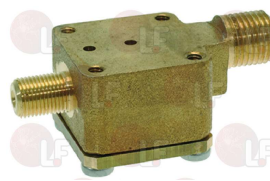
## Coffee groups

1160515 FILTER HOLDER BUSHING  
for brew group



BRUGNETTI-AURORA 000178

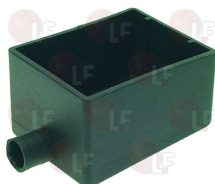
1018506 NOZZLE HOLDER FITTING FOR SOLENOID VALVE  
connections  $\varnothing$  1/8" M-1/4" M  
for brew group



BRUGNETTI-AURORA 000187

## Drain tanks

1527030 DRAIN TANK



BRUGNETTI-AURORA 000353



Suitable for:

Suitable for:

## Electronic boxes

**5033337 DOSING CONTROL BOX 2 GROUPS 230V**  
for Coffee machine (BRUGNETTI-AURORA) C



BRUGNETTI-AURORA 88.1.13.01

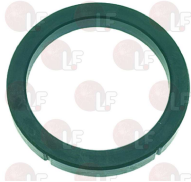
**5048271 DOSING CONTROL BOX 2 GROUPS 230V**  
for Coffee machine (BRUGNETTI-AURORA) ALEXIA



BRUGNETTI-AURORA 550.9.5.25.02

## Filter holder gaskets

**1186711 FILTER HOLDER GASKET  $\varnothing$  72x56x9 mm**  
4 external cuts  
for Coffee machine (BRUGNETTI-AURORA) ALEXIA - C



BRUGNETTI-AURORA 000177

## Filter holders for coffee machines

**1165162 BARLEY/COFFEE PODS FILTER HOLDER**  
wings 6.5 mm



BRUGNETTI-AURORA

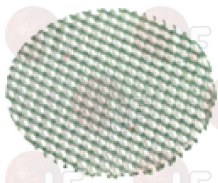
**1165088 FILTER HOLDER F/COFFEE MACHINES**  
spout connection  $\varnothing$  3/8" - knob connection M12  
blades 6.8 mm



BRUGNETTI-AURORA 000047.57

## Filters

**1160516 WATER FILTER  $\varnothing$  11 mm**



BRUGNETTI-AURORA 000179

## Flowmeters

**1455033 CONNECTOR FEMALE SMALL**  
for volumetric flowmeter



BRUGNETTI-AURORA

**1455032 IMPELLER GICAR**



BRUGNETTI-AURORA

Suitable for:

**3455333 VOLUMETRIC FLOWMETER COVER**



BRUGNETTI-AURORA

Suitable for:

**1455067 VOLUMETRIC FLOWMETER GICAR**  
connections  $\varnothing$  1/4"FF - orifice 1.15 mm - NSF



BRUGNETTI-AURORA 000601

## Gaskets and seals

**1186619 COPPER FLAT GASKET  $\varnothing$  18x14x1.5 mm**



BRUGNETTI-AURORA

**1186620 COPPER FLAT GASKET  $\varnothing$  22x17x1.5 mm**



BRUGNETTI-AURORA

**1186044 COPPER FLAT GASKET  $\varnothing$  24x20x1 mm**



BRUGNETTI-AURORA 000219

**1186823 COPPER FLAT GASKET  $\varnothing$  27x21.5x1 mm**



BRUGNETTI-AURORA

**1186527 FLAT EPDM GASKET  $\varnothing$  15x4x4 mm 80 SH**



BRUGNETTI-AURORA

**1186314 PTFE FLAT GASKET  $\varnothing$  22x17x2 mm**



BRUGNETTI-AURORA 000466

BRUGNETTI-AURORA 000501

**1186323 PTFE FLAT GASKET  $\varnothing$  24x18x2 mm**



BRUGNETTI-AURORA 000049

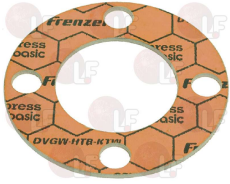


Suitable for:

Suitable for:

## Gaskets for coffee group

**1186015 COFFEE GROUP GASKET  $\varnothing$  78x42x2 mm**  
free of asbestos  
for Coffee machine (BRUGNETTI-AURORA) ALEXIA - C



BRUGNETTI-AURORA 000460

**1186098 COFFEE GROUP GASKET  $\varnothing$  78x43x2 mm**  
universal carbo  
for Coffee machine (BRUGNETTI-AURORA) ALEXIA - C



BRUGNETTI-AURORA 000460

## Gaskets for coffee machine boiler

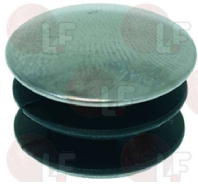
**1186276 BOILER GASKET  $\varnothing$  210x150x3 mm**  
universal carbo - 10 holes



BRUGNETTI-AURORA 000458A

## Handles for filterholder-portafilter

**5051776 CAP CHROMED KNOB FILTER HOLDER**  
mounting hole  $\varnothing$  18 mm



BRUGNETTI-AURORA 000044.57

**1241502 FILTER HOLDER HANDLE M10**



BRUGNETTI-AURORA

**1241169 FILTER HOLDER HANDLE M12**



BRUGNETTI-AURORA 000043.57

**1241269 FILTER HOLDER KNOB M10**



BRUGNETTI-AURORA

**1141006 FILTER HOLDER KNOB M10 SOFT**



BRUGNETTI-AURORA

**1141007 FILTER HOLDER KNOB M124 SOFT**



BRUGNETTI-AURORA



# BRUGNETTI-AURORA



Suitable for:

1241067 FILTER KNOB M12



BRUGNETTI-AURORA 000043

5054505 KNOB F.FILTERHOLDER M12 RED POLISHED



BRUGNETTI-AURORA

5054506 RED FILTER HOLDER KNOB M10 POLISHED



BRUGNETTI-AURORA

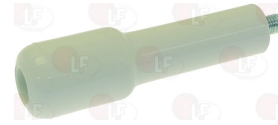
1141004 WOODEN FILTER HOLDER HANDLE M10



BRUGNETTI-AURORA

Suitable for:

5051751 FILTERHOLDER KNOB WHITE M10



BRUGNETTI-AURORA

1241507 RED FILTER HOLDER HANDLE M12



BRUGNETTI-AURORA

5051102 WHITE FILTER HOLDER KNOB M12



BRUGNETTI-AURORA

1141003 WOODEN FILTER HOLDER HANDLE M12



BRUGNETTI-AURORA

## Heating elements

1755622 HEATING ELEMENT 2000W 220V  
immersed length 230 mm - 4 poles  
distance between the holes 54 mm  
flange  $\varnothing$  90 mm  
for coffee machines with 1 group



BRUGNETTI-AURORA 000644



## Heating elements

**1755026 HEATING ELEMENT 2000W 230V**  
immersed length 175 mm - 2 poles  
connection  $\varnothing$  1"1/4  
for coffee machines with 1 group



BRUGNETTI-AURORA 000303

**1186633 FLAT CARBO GASKET  $\varnothing$  53x42x3 mm**  
universal carbo  
for heating element



**1755134 HEATING ELEMENT 2400W 230V**  
immersed length 240 mm - 4 poles  
connection  $\varnothing$  1"1/4  
for 2 groups coffee machines



BRUGNETTI-AURORA 000304

**1186633 FLAT CARBO GASKET  $\varnothing$  53x42x3 mm**  
universal carbo  
for heating element



**5032257 HEATING ELEMENT 3000W 230/400V**  
immersed length 305 mm - 6 poles  
distance between fixing holes 58 mm  
with bulb holder - flange 77x77 mm  
for 2 group coffee machines  
for Coffee machine (BRUGNETTI-AURORA) ALEXIA - C



BRUGNETTI-AURORA 000645.F

## Injectors

**1501541 NOZZLE M6x1 HOLE  $\varnothing$  0,8 mm**  
for brew group  
for Coffee machine (BRUGNETTI-AURORA) ALEXIA - C



BRUGNETTI-AURORA 000184



## Ironmongery (screws,nuts,washers)

**1455034 CYLINDER HEAD SCREW M4x10**  
stainless steel - with hexagon socket  
UNI 5931 - DIN 912 - ISO 4762



BRUGNETTI-AURORA 02.2101.04.10

**5057054 CYLINDER HEAD SCREW M6x16**  
stainless steel - with hexagon socket  
UNI 5931 - DIN 912 - ISO 4762



BRUGNETTI-AURORA 02.2102.06.16

## Knobs

**1241386 WATER/STEAM TAP KNOB**  
fine thread  
for Coffee machine (BRUGNETTI-AURORA) C



BRUGNETTI-AURORA 000222

## Level gauges

**1520501 LEVEL GLASS ø 12x175 mm**



BRUGNETTI-AURORA 000319

**1186090 LEVEL GLASS GASKET HOLDER**



BRUGNETTI-AURORA 000506

## Level sensors

**1341751 LEVEL PROBE ø 1/4" M-150 mm**  
for Coffee machine (BRUGNETTI-AURORA) ALEXIA - C



BRUGNETTI-AURORA 000436

## Lip seals

**1186091 LIP SEAL ø 15x8x4 mm**



BRUGNETTI-AURORA 000497

**1186095 LIP SEAL ø 15x9x5 mm**



BRUGNETTI-AURORA



Suitable for:

**1186816 LIP SEAL  $\varnothing$  50x38x7.5 mm**



BRUGNETTI-AURORA

Suitable for:

**1186817 LIP SEAL  $\varnothing$  51x38x7.5 mm**



BRUGNETTI-AURORA

## Nozzles for coffee groups

**1501014 GROUP SPRINKLER  $\varnothing$  30 mm M9.6x1**  
hole M5  
for Coffee machine (BRUGNETTI-AURORA) ALEXIA - C



BRUGNETTI-AURORA 000183

## OR and ORM gaskets

**1186717 O-RING 02031 VITON**



BRUGNETTI-AURORA 09.0059

**1186631 O-RING 02112 VITON**



BRUGNETTI-AURORA

## Paper seals

**1190011 PAPER SEAL  $\varnothing$  72x58x0.8 mm**



BRUGNETTI-AURORA 000177.S

## Pressure gauges

**1245507 BOILER PRESSURE GAUGE  $\varnothing$  52 mm 0÷3 bar**  
single scale 0÷3 bar - connection  $\varnothing$  1/4" M  
frame  $\varnothing$  57 mm - case  $\varnothing$  52 mm



BRUGNETTI-AURORA

**1245502 BOILER-PUMP PRESSURE GAUGE  $\varnothing$  60 mm**  
double scale 0÷2.5/0÷16 bar - connections  $\varnothing$  1/8" M  
rim  $\varnothing$  65 mm - body  $\varnothing$  60 mm



BRUGNETTI-AURORA



Suitable for:

**1245503 BOILER-PUMP PRESSURE GAUGE ø 60 mm**  
 double scale 0÷2.5/0÷15 bar - connections ø 1/8"M  
 rim ø 65 mm - body ø 60 mm



BRUGNETTI-AURORA

Suitable for:

**1245504 BOILER-PUMP PRESSURE GAUGE ø 60 mm**  
 double scale 0÷2.5/0÷16 bar - fittings ø 1/8"M  
 frame ø 65 mm - case ø 60 mm



BRUGNETTI-AURORA

**1245505 BOILER-PUMP PRESSURE GAUGE ø 60 mm**  
 double scale 0÷2.5/0÷16 bar - connections ø 1/8"M  
 rim ø 65 mm - body ø 60 mm



BRUGNETTI-AURORA

**1245532 BOILER-PUMP PRESSURE GAUGE ø 63 mm**  
 double scale 0÷2.5/0÷15 bar - connections ø 1/8"M  
 rim ø 70 mm - body ø 63 mm



BRUGNETTI-AURORA

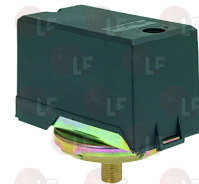
## Pressure switches

**1320533 MEMBRANE KIT FOR PRESSURE SWITCH**  
 model P302-6 ø 55 mm



BRUGNETTI-AURORA

**1320541 PRESSURE SWITCH PARKER**  
 CEI-UL approved  
 connection ø 1/4"  
 scale 0.5÷1.4 bar  
 differential 0.18÷0.03 bar  
 maximum pressure 2.1 bar  
 maximum temperature 140°C



BRUGNETTI-AURORA

**1320531 PRESSURE SWITCH P302/6 3-POLES 30A**  
 CE-SEV-ASE-UL approved  
 ISO 228 G connection 1/4"M for pipe ø 4x6 mm  
 adjustable scale 0.5÷1.4 bar  
 fixed differential 0.15 (ý 0.06) bar  
 fluid temperature max :140°C  
 max contact load : 220V 7KW (30A)  
 400V 12KW (30A)



BRUGNETTI-AURORA 000399



Suitable for:

Suitable for:

## Rubberpieces for steam-water taps

**1186339 BURN PREVENTING PIPE HANDGRIP  $\varnothing$  8 mm**



BRUGNETTI-AURORA

## Seals for level glasses

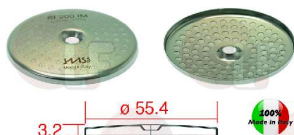
**1186227 FLAT EPDM GASKET  $\varnothing$  21x11.5x5 mm**  
for level glass



BRUGNETTI-AURORA 000464

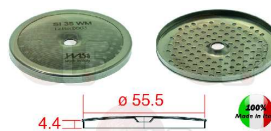
## Shower screens for brew group

**1460204 PRECISION SHOWER SCREEN  $\varnothing$  56.5 mm**  
central hole 6 mm - 98 holes  $\varnothing$  3 mm  
Aisi 316 stainless steel - food-safe certified  
integrated membrane 200  $\mu$ M  
for Coffee machine (BRUGNETTI-AURORA)



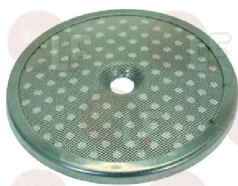
BRUGNETTI-AURORA

**1460209 PRECISION SHOWER SCREEN  $\varnothing$  57.5 mm**  
central hole 6 mm - 112 holes  $\varnothing$  2 mm  
Aisi 304 stainless steel - food-safe certified  
wire diaphragm 35  $\mu$ M  
for Coffee machine (BRUGNETTI-AURORA)



BRUGNETTI-AURORA

**1081026 SHOWER  $\varnothing$  56.5 mm**  
for Coffee machine (BRUGNETTI-AURORA) ALEXIA - C



BRUGNETTI-AURORA 000182

**1081003 SHOWER SCREEN  $\varnothing$  57.5 mm**



BRUGNETTI-AURORA

## Solenoid valves

- 1120809 SOLENOID VALVE ODE 3 WAYS 230V 8W**  
 RUBY seal - orifice  $\varnothing$  1.5 mm  
 TAPERED fitting  
 with coil B0108223DS 220/230V 50/60Hz 8W  
 fluid temperature -40°C +180°C



BRUGNETTI-AURORA

- 1120354 2-WAY SOLENOID VALVE PARKER 230V 50/60Hz**  
 VE146NV - fittings  $\varnothing$  1/4" FF - max 10 bar  
 VITON sealing - orifice  $\varnothing$  2.5 mm  
 with coil ZB09 9W 220/230V 50/60Hz  
 fluid temperature -10°C +140°C



BRUGNETTI-AURORA

- 1120330 3-WAY SOLENOID VALVE LUCIFER 240V 50Hz**  
 E131F4304 - drain  $\varnothing$  1/8" conical - max 10 bar  
 RUBY seal - orifice  $\varnothing$  2.5 mm  
 with coil 483510S6 9W 220/240V 50/60Hz  
 fluid temperature -40°C+140°C



BRUGNETTI-AURORA 000191

- 1120334 3-WAY MECHANICAL COMPONENT LUCIFER**  
 E131F4304G - drain  $\varnothing$  1/8" conical - max 10 bar  
 RUBY seal - orifice  $\varnothing$  1.5 mm  
 fluid temperature -30°C+140°C



- 3120032 COIL PARKER ZB09 9W 220/240V 50/60Hz**  
 width 34 mm - height 33 mm  
 depth 43 mm



BRUGNETTI-AURORA

- 1120332 COIL LUCIFER/PARKER 220/240V 9W 50Hz**  
 width 32 mm - height 38 mm  
 depth 43 mm



BRUGNETTI-AURORA



# BRUGNETTI-AURORA



Suitable for:

**1120335 3-WAY SOLENOID VALVE PARKER 230V 50/60Hz**  
VE128IR - drain  $\varnothing$  1/8" conical - max 10 bar  
RUBY seal - orifice  $\varnothing$  1.3 mm  
with coil ZB09 9W 220/230V 50/60Hz  
fluid temperature -30°C+140°C



BRUGNETTI-AURORA

Suitable for:

**3120032 COIL PARKER ZB09 9W 220/240V 50/60Hz**  
width 34 mm - height 33 mm  
depth 43 mm



BRUGNETTI-AURORA

**1120339 3-WAY MECHANICAL COMPONENT PARKER**  
VE128IR - drain  $\varnothing$  1/8" conical - max 10 bar  
RUBY seal - orifice  $\varnothing$  1.3 mm  
fluid temperature -30°C+140°C



## Spouts for coffee

**1022504 CLOSED SINGLE SPOUT  $\varnothing$  3/8"**



BRUGNETTI-AURORA

**1022524 DOUBLE SPOUT  $\varnothing$  3/8"**



BRUGNETTI-AURORA

**1022521 LONG DOUBLE SPOUT  $\varnothing$  3/8"**



BRUGNETTI-AURORA

**1022503 STRAIGHT SINGLE SPOUT  $\varnothing$  3/8"**



BRUGNETTI-AURORA 000040

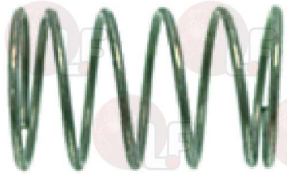
**5031337 1-CUP STRAIGHT SHORT SPOUT  $\varnothing$  3/8"**



BRUGNETTI-AURORA

## Springs

- 1250506 FILTER BLOCKING SPRING  $\varnothing$  9x14 mm**  
for Coffee machine (BRUGNETTI-AURORA) ALEXIA - C



BRUGNETTI-AURORA 000180

## Steam-water pipes coffee machines

- 1449326 STAINLESS STEEL STEAM PIPE COMPL.  $\varnothing$  10 m**  
for Coffee machine (BRUGNETTI-AURORA) ALEXIA



BRUGNETTI-AURORA LAV2011

BRUGNETTI-AURORA 800202

BRUGNETTI-AURORA 800203

## Switches

- 1319545 PUSH-BUTTON PANEL MEMBRANE 5 BUTTONS**



BRUGNETTI-AURORA

- 1319551 PUSH-BUTTON PANEL 5 BUTTONS**



BRUGNETTI-AURORA

## Tampers for coffee

- 1385000 NYLON TAMPER  $\varnothing$  50/52 mm**



BRUGNETTI-AURORA 000447

## Water filling taps

- 1186093 GASKET HOLDER FOR TAP**  
for water inlet tap



BRUGNETTI-AURORA 000493



## Water softeners and accessories

**3010001 MANUAL WATER SOFTENER 8 L  $\varnothing$  3/8"**  
 for water treatment for TECHNICAL purposes  
 STAINLESS STEEL cylinder capacity 8 L  
 connection 3/8"  
 dimensions: height 400 mm -  $\varnothing$  185 mm  
 resin content 5.8 L  
 regeneration salt(NaCl-table salt)1 Kg

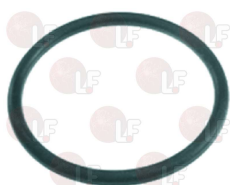


**3010023 BLACK BASE FOR GS WATER SOFTENER**



BRUGNETTI-AURORA 000253

**3010018 GASKET FOR WATER SOFTENER LID**  
 OR  $\varnothing$  74x6.5 mm



**3010021 INLET FILTER**  
 for DVA models



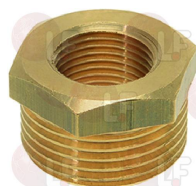
**3010019 LID HANDLE**  
 for DVA models



**3010022 OUTLET FILTER**  
 for DVA models



**3010014 PIPE FITTING  $\varnothing$  3/8" F x 3/4" M**  
 for DVA models



**3010016 PLASTIC JET M6**  
 for DVA models



**3010015 PLASTIC TAP HANDLE**  
 for DVA models



**3010012 TAP  $\varnothing$  3/4"**  
 for models DVA  
 for DISHWASHERS







Suitable for:

**3010011 WATER INLET TAP  $\varnothing$  3/8"**  
for DVA models



## BRUGNETTI-AURORA



Suitable for:


















**3010080 WATER SOFTENER LID ASSEMBLY**  
for DVA models



*The data herewith contained may change without notice and LF SpA cannot be held responsible for possible errors stated or resulting by the use of this document. All rights reserved. No part of this publication may be reproduced without written permission by LF SpA.*



Distributing Components, Spare Parts & Accessories  
in original quality worldwide

- 
-  **LF SpA HEADQUARTERS**  
via Voltri, 80 - 47522 Cesena (FC) ITALY  
Tel. +39 0547 34 11 11 - Fax +39 0547 34 11 10  
[www.lfcomb724.it](http://www.lfcomb724.it) - [www.lfcomb724.mobi](http://www.lfcomb724.mobi) - [info@lfcomb.it](mailto:info@lfcomb.it)  
Export Dept.: Tel. +39 0547 34 11 50 - Fax: +39 0547 34 11 55  
[www.lfspareparts724.com](http://www.lfspareparts724.com) - [www.lfspareparts724.mobi](http://www.lfspareparts724.mobi)  
[export@lfspareparts.com](mailto:export@lfspareparts.com)
  -  **OOO LF RUSSIAN FEDERATION**  
Ul. Anatoliya Zhivova, 8 - office 1 - 123100 Moscow  
Tel. +7 499 259 85 75  
Fax +7 495 725 26 53  
[www.lfspareparts724.ru](http://www.lfspareparts724.ru)  
[www.lfspareparts724.mobi](http://www.lfspareparts724.mobi)  
[info@lfspareparts.ru](mailto:info@lfspareparts.ru)
  -  **EPGC Sas FRANCE**  
13, Rue des Forts - 59960 Neuville en Ferrain  
Tel. +33 (0)3 20 25 06 21  
Fax +33 (0)3 20 25 34 12  
[www.epgc.com](http://www.epgc.com)  
[www.epgc724.mobi](http://www.epgc724.mobi)  
[epgc@epgc.com](mailto:epgc@epgc.com)
  -  **LF Repuestos Horeca S.L.U. SPAIN**  
Calle Ciudad Real, 10 - 45517 Escalonilla - Toledo  
Tel. +34 91 477 91 00  
Fax +34 91 477 90 81  
[www.lfrepuestos-horeca724.es](http://www.lfrepuestos-horeca724.es)  
[www.lfrepuestos724.mobi](http://www.lfrepuestos724.mobi)  
[info@lfrepuestos.es](mailto:info@lfrepuestos.es)
  -  **LF GmbH GERMANY**  
Junkersstrasse, 1 - D-82178 Puchheim - München  
Tel. +49 89 89 45 78 66  
Fax +49 89 89 45 78 88  
[www.lfersatzteile724.de](http://www.lfersatzteile724.de)  
[www.lfersatzteile724.mobi](http://www.lfersatzteile724.mobi)  
[info@lfersatzteile.de](mailto:info@lfersatzteile.de)
  -  **LF SpA Cesena (IT) Swiss Branch Steinhausen SWITZERLAND**  
Sennweidstrasse, 45 - CH-6312 Steinhausen  
Tel. +41 (0)41 760 15 80-1  
Fax +41 (0)41 760 15 85  
[www.lfersatzteile724.ch](http://www.lfersatzteile724.ch)  
[www.lfersatzteile724.mobi](http://www.lfersatzteile724.mobi)  
[info@lfersatzteile.ch](mailto:info@lfersatzteile.ch)
  -  **LF China REPUBLIC OF CHINA**  
Room 403, No.2, Huadu Mansion, Lane 422, Huanghua Rd.  
Minhang Dist. - 201103 Shanghai  
Tel. +86 (0)21 33 53 66 31  
Fax +86 (0)21 33 53 66 32  
[www.lfspareparts724.com](http://www.lfspareparts724.com)  
[www.lfspareparts724.mobi](http://www.lfspareparts724.mobi)  
[china@lfspareparts.com](mailto:china@lfspareparts.com)
  -  **LF Spare Parts Ltd. UNITED KINGDOM**  
A10a Lakeside Business Park, Broadway Lane  
South Cerney, Gloucestershire GL7 5XL  
Tel. +44 (0)1285 86 16 25  
Fax +44 (0)1285 86 39 49  
[www.lfspareparts724.co.uk](http://www.lfspareparts724.co.uk)  
[www.lfspareparts724.mobi](http://www.lfspareparts724.mobi)  
[info@lfspareparts.co.uk](mailto:info@lfspareparts.co.uk)
- 
-  **AUSTRALIA AND NEW ZEALAND**  
[www.lfspareparts724.com](http://www.lfspareparts724.com)  
[andrea.calvio@lfspareparts.com](mailto:andrea.calvio@lfspareparts.com)
  -  **DENMARK**  
[www.lfspareparts724.dk](http://www.lfspareparts724.dk)  
[michael.lenth@lfspareparts.com](mailto:michael.lenth@lfspareparts.com)
  -  **AUSTRIA**  
[www.lfspareparts724.at](http://www.lfspareparts724.at)  
[ludwig.neier@lfersatzteile.at](mailto:ludwig.neier@lfersatzteile.at)
  -  **SOUTH KOREA**  
[www.lfspareparts724.com](http://www.lfspareparts724.com)  
[fabio.doni@lfspareparts.com](mailto:fabio.doni@lfspareparts.com)
  -  **BALKAN COUNTRIES**  
[www.lfspareparts724.com](http://www.lfspareparts724.com)  
[matija.ramov@lfspareparts.com](mailto:matija.ramov@lfspareparts.com)
  -  **TURKEY**  
[www.lfyedekparca724.com](http://www.lfyedekparca724.com)  
[basar.ergun@lfyedekparca.com](mailto:basar.ergun@lfyedekparca.com)
  -  **BALTIC COUNTRIES**  
[www.lfspareparts724.com](http://www.lfspareparts724.com)  
[inara.silina@lfspareparts.com](mailto:inara.silina@lfspareparts.com)
  -  **USA AND CANADA**  
[www.lfspareparts724.us](http://www.lfspareparts724.us)  
[sauro.dallaglio@lfspareparts.us](mailto:sauro.dallaglio@lfspareparts.us)  
[howard.truitt@lfspareparts.us](mailto:howard.truitt@lfspareparts.us)
  -  **CENTRAL AND EASTERN EUROPE**  
[www.lfspareparts724.cz](http://www.lfspareparts724.cz)  
[jiri.kremla@lfspareparts.cz](mailto:jiri.kremla@lfspareparts.cz)